

DISEGNO N.:

**5**

PROPRIETÀ

**IMPRESA INDIVIDUALE SELVA ANDREA**

OGGETTO

**P.E.C. DI VIA VILLANI**

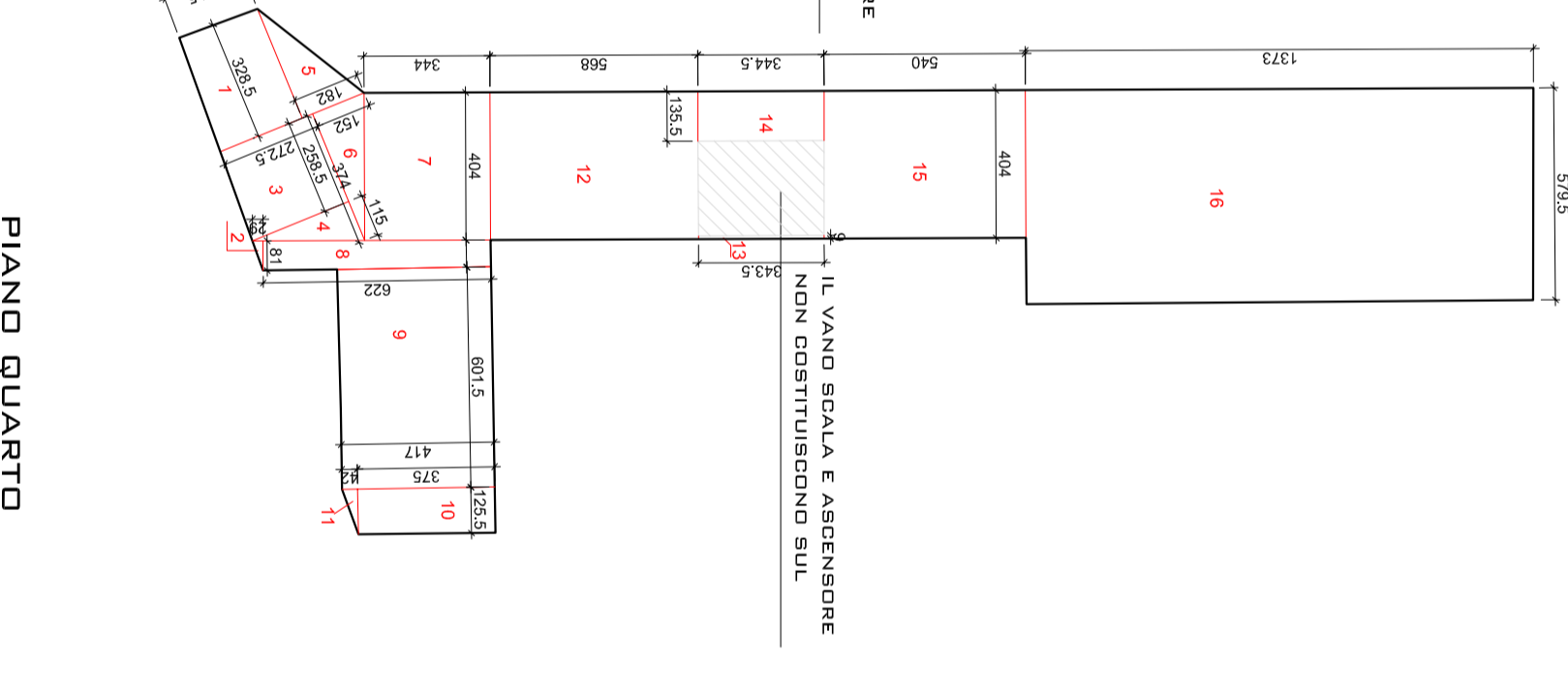
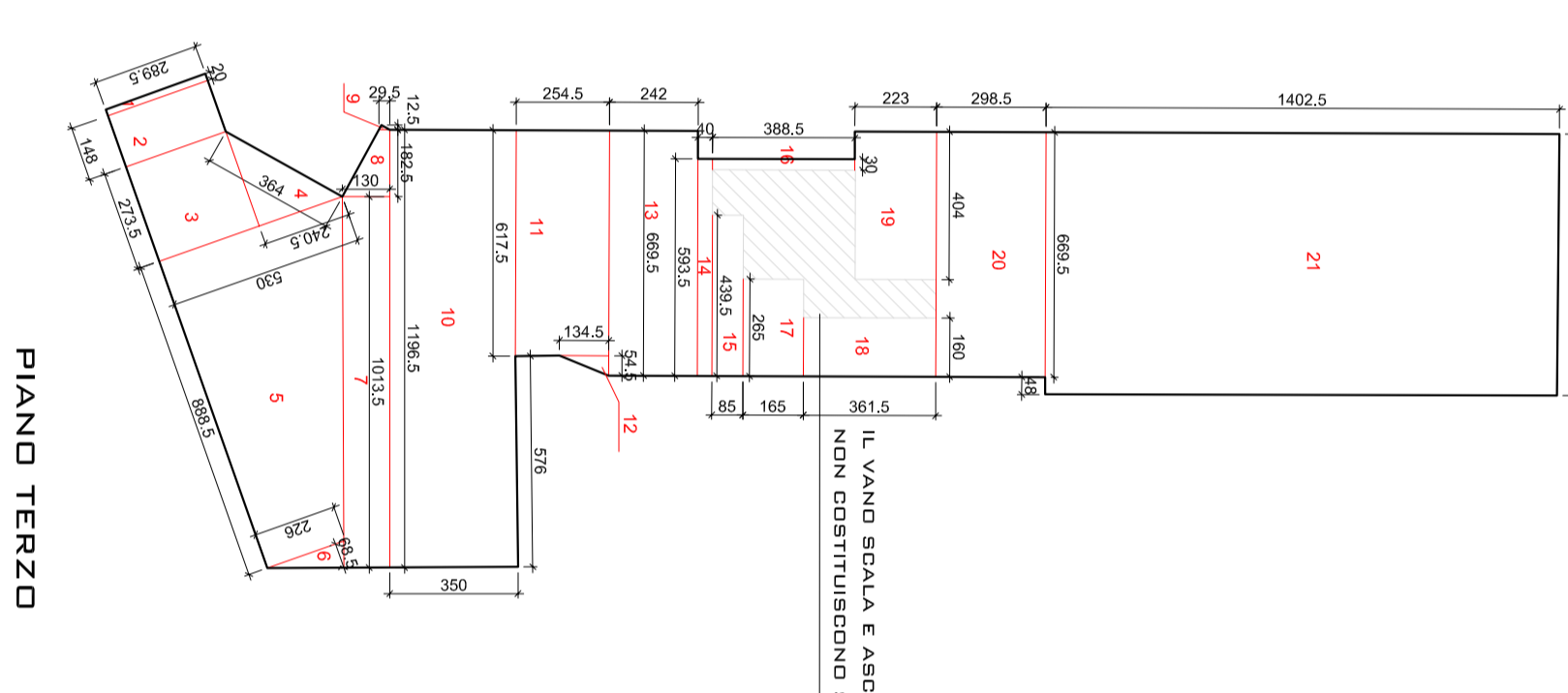
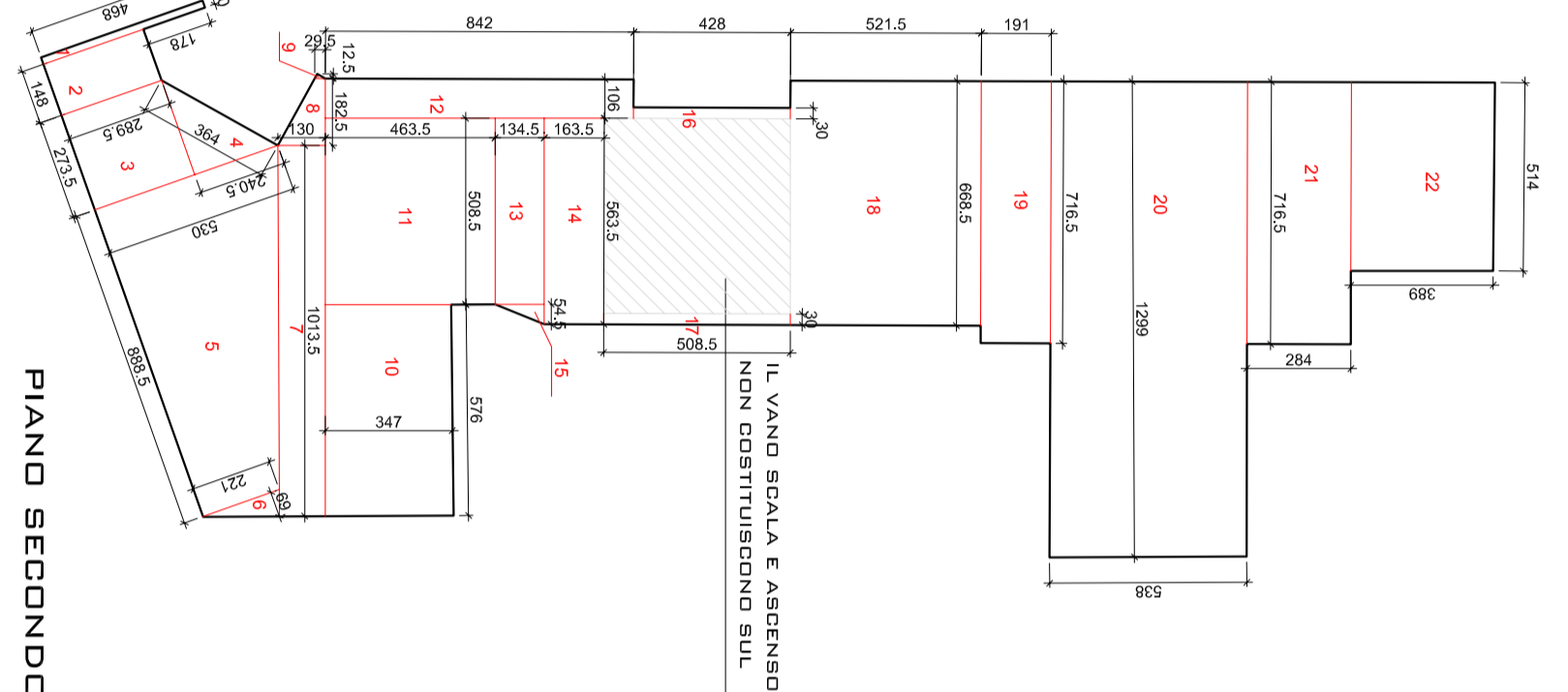
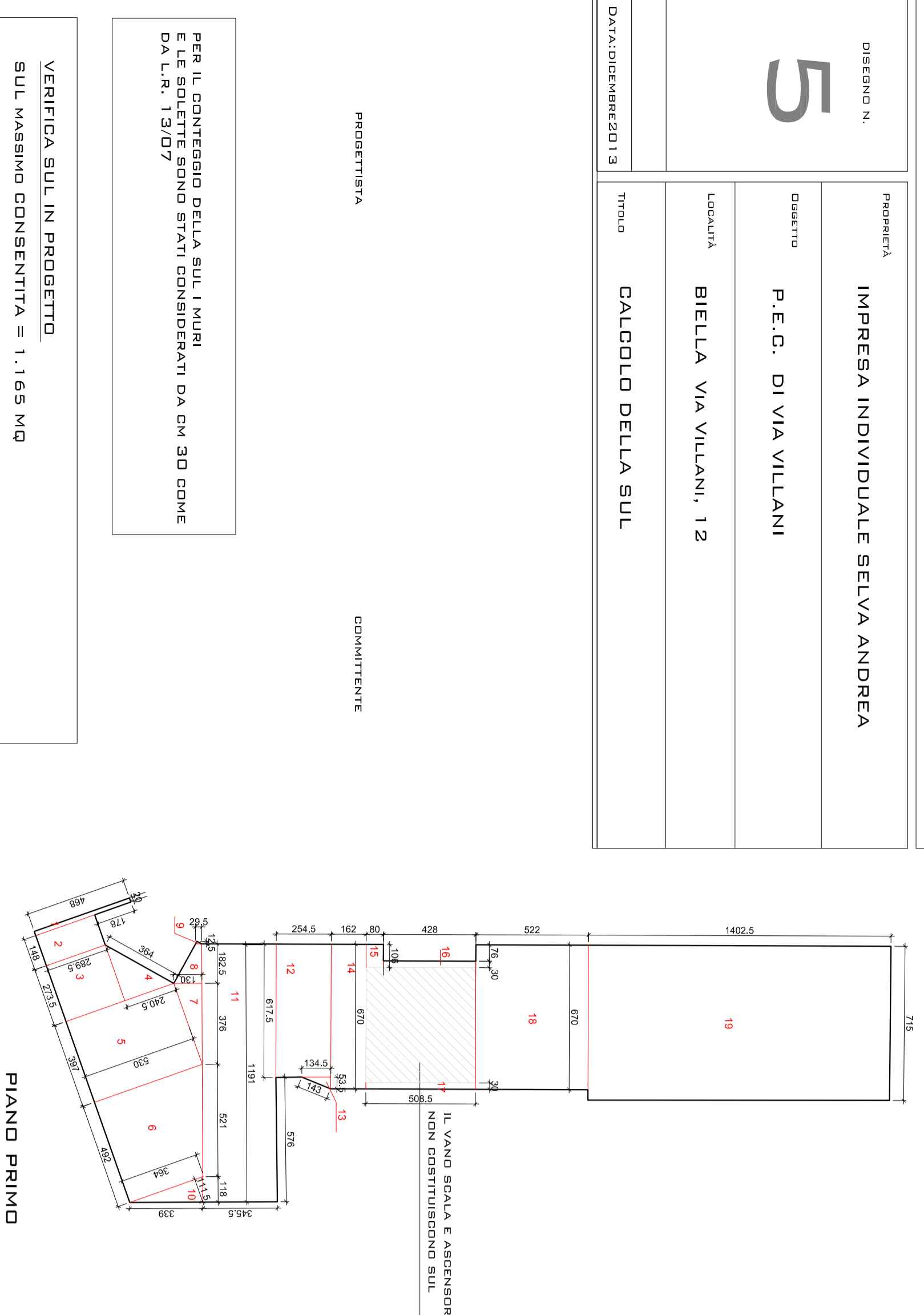
LOCALITÀ

**BIELLA VIA VILLANI, 12**

TITOLO

**CALCOLO DELLA SUL**

DATA: DICEMBRE 2013



**VERIFICA GRAFICA DELLE AREE A VERDE-PARCHIEGGI**

**PIANO PRIMO**

N°	DETTAGLI SUPERFICIE	SUPERFICIE PORZIONE	SUPERFICIE TOTALE
1	0.20x4.68 =	0.93 mq	
2	1.48x2.89 =	4.27 mq	
3	2.89x2.73 =	7.90 mq	
4	2.73x2.40/2 =	3.28 mq	
5	5.30x3.97 =	21.04 mq	
6	5.30+3.64/2x4.92 =	22.01 mq	
7	3.76x1.30/2 =	2.44 mq	
8	1.30+0.25/2x1.82 =	1.45 mq	
9	0.29x0.12/2 =	0.08mq	
10	3.64x1.11/2 =	2.02 mq	
11	1.19x3.45 =	41.05 mq	
12	2.54x6.17 =	15.6 mq	
13	1.34x0.53/2 =	0.35 mq	
14	1.62x6.70 =	10.85 mq	
15	0.8x1.06 =	0.84 mq	
16	0.30x4.28 =	1.28 mq	
17	5.08x0.30 =	1.52 mq	
18	6.70x5.22 =	34.97 mq	
19	7.15x14.02 =	100.2 mq	
			<b>272 mq</b>

**PIANO TERZO**

1	0.20x2.89 =	0.57mq	
2	1.48x2.89 =	4.27 mq	
3	2.89x2.73 =	7.88 mq	
4	2.73x2.40/2 =	3.28 mq	
5	5.30+2.26/2x8.88 =	33.56 mq	
6	2.26x0.68/2 =	0.76 mq	
7	1.30x10.13 =	13.16 mq	
8	1.30+0.29/2x1.82 =	1.45 mq	
9	0.29x0.12/2 =	0.08 mq	
10	3.50x1.196	41.86 mq	
11	2.54x6.17 =	15.67 mq	
12	1.34x0.54/2 =	0.36 mq	
13	2.42x6.69 =	16.18 mq	
14	5.93x0.40 =	2.37 mq	
15	0.85x4.39 =	3.73 mq	
16	3.88x0.30 =	2.26 mq	
17	2.65x1.65 =	4.37 mq	
18	3.61x1.60 =	5.77 mq	
19	4.04x2.23 =	9.00 mq	
20	2.98x6.69 =	19.93 mq	
21	7.14x14.02 =	100.13 mq	
			<b>286 mq</b>

**PIANO SECONDO**

1	0.20x4.68 =	0.93 mq	
2	1.48x2.89 =	4.27 mq	
3	2.73x2.89 =	7.88 mq	
4	2.73x2.40/2 =	3.28 mq	
5	5.30+2.21/2x8.88 =	33.36 mq	
6	2.21x0.69/2 =	0.76 mq	
7	1.23x10.13 =	12.71 mq	
8	1.30+2.95/2x1.82 =	1.45 mq	
9	0.29x0.12/2 =	0.08 mq	
10	5.76x3.47	19.98 mq	
11	5.08x4.63 =	23.52 mq	
12	1.06x8.42 =	8.92 mq	
13	1.34x5.08 =	6.80 mq	
14	1.63x5.63 =	9.17 mq	
15	1.34x0.54/2 =	0.36 mq	
16	0.30x4.28 =	1.28 mq	
17	0.30x5.08 =	1.52 mq	
18	6.68x5.21 =	34.80 mq	
19	1.91x7.16 =	13.67 mq	
20	5.38x12.99 =	69.88 mq	
21	7.16x2.84 =	20.33 mq	
22	3.89x5.14 =	19.99 mq	
			<b>295 mq</b>

**PIANO QUARTO**

1	2.27x3.28 =	7.44 mq	
2	0.26x0.81 =	0.23 mq	
3	2.27x2.58 =	7.01 mq	
4	2.27x1.15/2 =	1.30 mq	
5	3.28x1.82/2 =	2.98 mq	
6	3.74x1.52/2 =	2.84 mq	
7	4.04x3.44 =	13.89 mq	
8	0.81x6.22 =	5.03 mq	
9	6.01x4.17 =	25.06 mq	
10	1.25x3.75	4.68 mq	
11	1.25x0.42/2 =	0.26 mq	
12	5.68x4.04 =	22.94 mq	
13	0.09x3.43 =	0.30 mq	
14	3.44x1.35 =	4.64 mq	
15	4.04x5.40 =	21.8 mq	
16	13.73x5.79 =	79.49 mq	
			<b>200 mq</b>

PER IL CONTEGGIO DELLA SUL I MURI E LE SOLETTE SONO STATI CONSIDERATI DA CM 30 COME DA L.R. 13/07

PROGETTISTA

COMMITTENTE

VERIFICA SUL IN PROGETTO

SUL MASSIMO CONSENTITA = 1.165 MQ

SUL IN PROGETTO:

PIANO TERRA MQ 0

PIANO PRIMO MQ 272

PIANO SECONDO MQ 295

PIANO TERZO MQ 286

PIANO QUARTO MQ 200

PIANO QUINTO MQ 0

TOTALE SUL MQ 1.053 < 1.165 MASSIMO CONSENTITO